

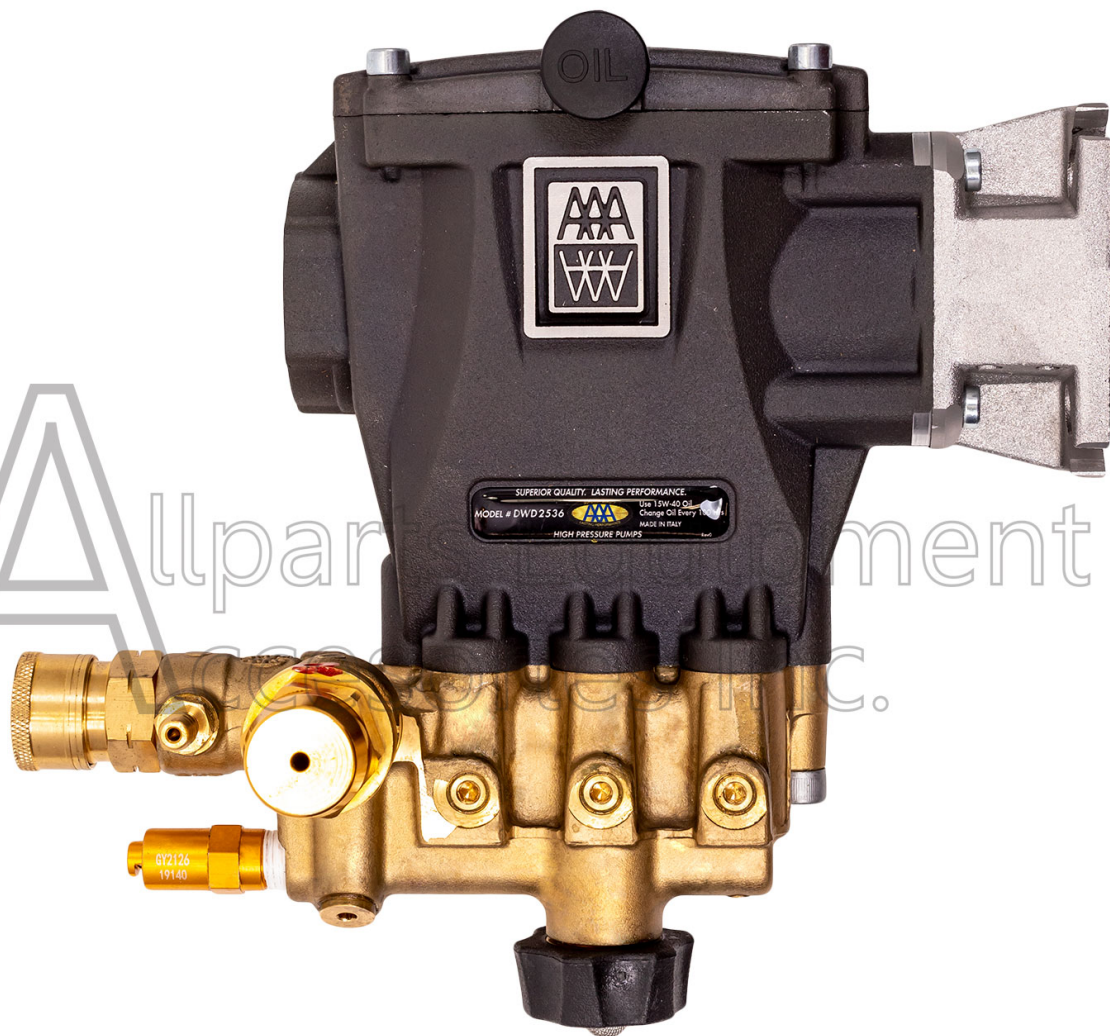
AAA® Triplex Pump Kit



Driven by PERFORMANCE™

PUMPS COVERED IN THIS IPL

DWD2536 & FNA 7117086

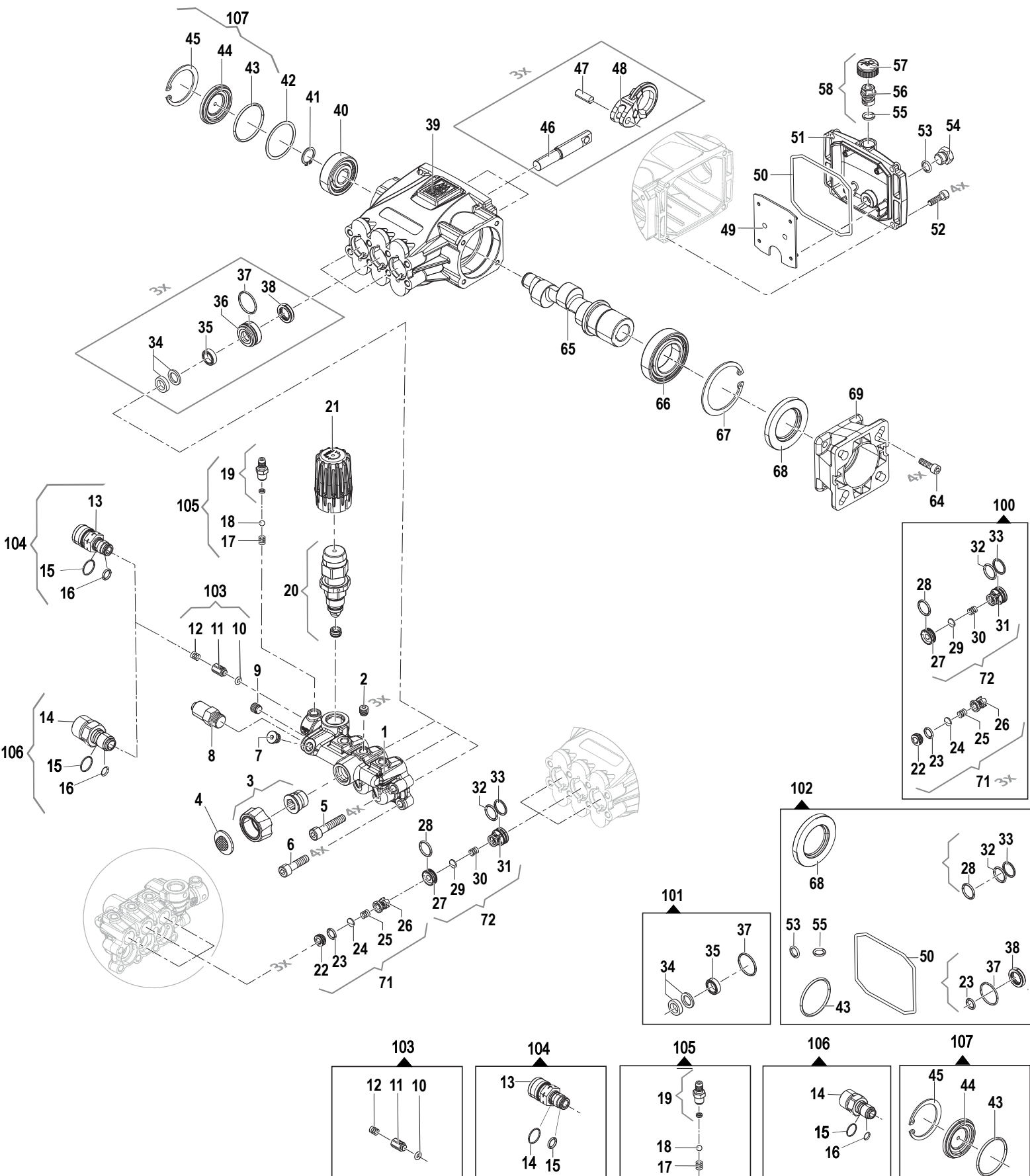


DWD2536

FNA 7117086

Pumps

3400 RPM



N°	FNA Item	Description	Note	Q.ty
1	N/A	Pump Manifold		1
2	N/A	Screw	G1/8"	3
3	7120150	Water Inlet Kit		1
4	7000123	Inlet Screen W/Gasket		1
5	N/A	Screw	M8x40	4
6	N/A	Screw	M8x30	4
7	V/A	Screw	G1/8"	1
8	7101359	Thermal Release Valve	G1/4"	1
9	N/A	Screw	G1/8"	1
10	See Kit 103	O-Ring	2,4x5,6	1
11	See Kit 103	Check Valve		1
12	See Kit 103	Spring		1
13	See Kit 104	Quick Coupling + Ejector	EI 1,8	1
14	See Kit 104/106	M22x1.5 M w/Injector	M22x1.5 M	1
15	See Kits 104/106	O-ring	1,78x15,6	1
16	See Kits 106	O-ring	1,78x12,42	1
17	See Kit 105	Spring		1
18	See Kit 105	Ball	7/32"	1
19	See Kit 105	Hose Fitting		1
20	7115020	Regulating Valve Kit		1
21	7115021	Valve Knob Unloader		1
22	See Kit 100	Suction/Discharge Valve Seat		3
23	See Kit 100/102	O-Ring	1,78x8,73	3
24	See Kit 100	Suction/Discharge Valve		3
25A	N/A	Suction/Discharge Valve Spring		3
25B	See Kit 100	Suction/Discharge Valve Spring		3
26	See Kit 100	Suction/Discharge Valve Cage		3
27	See Kit 100	Suction/Discharge Valve Seat (Discharge side)		3
28	See Kit 100/102	O-Ring	1,78x12,42	3
29	See Kit 100	Suction/Discharge Valve		3
30A	N/A	Suction/Discharge Valve Spring		3
30B	See Kit 100	Suction/Discharge Valve Spring		3
31	See Kit 100	Suction/Discharge Valve Cage (Discharge side)		3
32	See Kit 100/102	O-Ring	1,78x14	3
33	See Kit 100/102	Ring	1,78x14	3
34	See Kit 101	Sealing Ring	12x18x6,5	3
35	See Kit 101	Sealing Ring	12x18x5	3
36	7120151	Water Seal Retainer	D12	3
37	See 101/102	O-Ring	1,78x23,52	3
38	See 102	Sealing Ring	14x22x5	3
39	N/A	Pump Crankcase	Vr FNA	1
40	N/A	Bearing	17x47x14	1
41	N/A	Outer Seeger	D.17	1
42	N/A	Axial Ring	40x46,5x0,5	1
43	See 102/107	O-Ring Site Glass	2,62x40,95	1
44	See 107	Side Cover		1
45	See 107	Inner Seeger	D.47	1
46	7115025	Piston	D.12	3
47	N/A	Pin	8x23	3
48	N/A	Connection Rod		3
49	7110310	Baffle, Crankshaft Cover		1

da/from S.N. 51319207

da/from S.N. 51319207

N°	FNA Item	Description	Note	Q.ty
50	See 102	O-Ring	3,0x88	1
51	N/A	Crankcase Cover		1
52	7110307	Screw	M6x20	4
53	7115026/See 102	O-Ring	2,62x9,92	1
54	7106869	Cap	G1/4"	1
55	See Kit 58/102	O-Ring	2,62x9,13	1
56	See Kit 58	Cap, Breather Plug		1
57	See Kit 58	Cap		1
58	7110299	Vented Cap Kit EW/DW		1
64	N/A	Screw	M6x20	4
65	N/A	Eccentric Shaft		1
66	N/A	Bearing	35x62x14	1
67	N/A	Inner Seeger	D.62	1
68	See 102	Sealing Ring	35x62x7	1
69A	N/A	Motor/Pump Support		1
69B	N/A	Motor/Pump Support		1
71	See Kit 100	Suction Valve Assy Kit		3
72	See Kit 100	Delivery Valve Assy Kit		3

da/frdm S.N. 52265072

Kits

Spare Parts Kit

100	7114725	Complete Valve Kit		1
101	7114711	Water Seal Kit		1
102	7120152	Oil Seal Kit		1
103	7115566	Outlet Check Valve Kit		1
104	7115567	QC Outlet W/Injector Body Kit		1
105	7115568	Injector Kit		1
106	7118732	M22x1.5 M W/Injector		1
107	7120156	Site Glass Kit		1